

Appendix 1.

## **Project Description and Specifications**

For the acquisition of set pieces for:

**Figaros Bryllup**

**Reference no.: 122006**



March 2024



## Appendix 1. Project Description and Specifications

### Figaros Bryllup

---

<b>1. Project Description .....</b>	<b>3</b>
<b>1.1 General Description .....</b>	<b>3</b>
<b>1.2 Artistic Team .....</b>	<b>3</b>
<b>1.3 Story Line .....</b>	<b>3</b>
<b>1.4 Set Pieces.....</b>	<b>4</b>
<b>2. Work Process.....</b>	<b>4</b>
<b>2.1 Start-up meeting.....</b>	<b>4</b>
<b>2.2 Model &amp; drawings .....</b>	<b>4</b>
<b>2.3 Modifications .....</b>	<b>4</b>
<b>2.4 Regular meetings .....</b>	<b>4</b>
<b>2.5 Final supervision and pre-assembly meeting .....</b>	<b>5</b>
<b>2.6 Delivery .....</b>	<b>5</b>
<b>3. General Conditions .....</b>	<b>6</b>
<b>3.1 Model and technical drawings .....</b>	<b>6</b>
<b>3.2 Weight .....</b>	<b>6</b>
<b>3.3 Materials.....</b>	<b>6</b>
<b>3.4 Quality and safety .....</b>	<b>6</b>
<b>4. Materiel deliveries by RDT.....</b>	<b>8</b>
<b>5 Set and Stage Plan and Model Photos .....</b>	<b>9</b>
<b>6. 122006-01 Stairs and Plateaus .....</b>	<b>13</b>

Read more about RDT: <https://kglteater.dk/en/about-us/about-the-theatre/the-history-of-the-royal-danish-theatre/>



## 1. PROJECT DESCRIPTION

### 1.1 General Description

#### **The production project**

Scenic elements for the opera Figaros bryllup/The Marriage of Figaro.

Opening October 6, 2024, at The Opera House, Main Stage, Copenhagen.

#### **The Artistic project**

The Marriage of Figaro/Le nozze di Figaro is a recurring Mozart classic. This version will be with recognizable rococo - and sturdiness for a long life with many revivals.

The production is adaptable for The Old Stage and for touring to various, larger, venues in Denmark as well.

A story with archetype characters, who in a labyrinthine monolith roam around the path of life, struggling with identity and conventions.

### 1.2 Artistic Team

Scenic Design	Rikke Juellund
Director	Anne Barslev
Lightning design	Ellen Ruge

### 1.3 Story Line

A classical Mozart comedy.

With contemporary references to social mobility, identity, gender, revolution. The longing to find one's place in life – everyone fights for the right to their own life and self-determination.

The sacrificial lamb is slaughtered, parted, and cooked. Smoke, steam, and light seep out – the social shake comes from within.



### **Summary – Scenic design**

A labyrinthine monolith with differentiated decors for upstairs and downstairs; the Countess and Count and the servants.

## **1.4 Set Pieces**

122006 -01      Plateaus and Stairs

## **2. WORK PROCESS**

### **2.1 Start-up meeting**

A start up meeting with the production manager from RDT, covering the review of the full model, commenting in detail the specific items in the offer.

### **2.2 Model & drawings**

The model will be available to the supplier during the production period.

All drawings are available in PDF-version and DWG format. All models are default available in STP format.

Digital model created in Autodesk Inventor.

### **2.3 Modifications**

Modifications of any kind, such as any changes to solutions or materials, which might be a subject to discussion, must be approved by the production manager at RDT and documented in writing before implementation.

### **2.4 Regular meetings**

Regular meetings at the supplier's premises with the Production Manager and representatives from RDT and/or the Set designer. The meetings must match the production flow, planned and scheduled to meet the quality approval on Structure and surfaces.

If RDT / the production manager or representatives after supervision meetings are concerned about the progress in the workflow according to the delivery time, the supplier must document



## Appendix 1. Project Description and Specifications

### Figaros Bryllup

---

and proof the ability to comply. The documentation must include a time schedule, milestones, and adequate staffing. In addition to these, a status report and follow-ups on the progress stated to a frequency according to agreement.

#### 2.5 Final supervision and pre-assembly meeting

The Set must be pre-assembled (and disassembled) in full scale before delivery.

The production manager and Chief Carpenter will attend the final supervision and pre-assembly meeting, where details of the “get in” will be discussed.

#### 2.6 Delivery

Delivery of the Set pieces for “Figaros Bryllup” to RDT will take place: no later than **07.30 AM, on the 14th of August; at The Danish Royal Theatre**

**Operaen, Ekvipagemestervej 10, 1438 Copenhagen K**

The supplier must be present upon receipt of transport.

**The assembly period is 3 days, starting 14.08.2024 and ending 16.08.2024**

The supplier must provide assembly assistance on stage.

The assistance is to guide the crew at RDT, who will execute the assembly.

To ensure a smooth assembly supervision – the supervisors must be able to communicate in Danish or English.

The crew consists of 6 tech crew members and a Chief Carpenter.

#### Loading facilities

- The Opera/Operaen: Please notice – No access for sideload at the Opera.  
The loading dock for long trailer is for rear unloading.

Notice! The RDT Wagons supplied can/should be used as transport dollies.



### 3. GENERAL CONDITIONS

#### 3.1 Model and technical drawings

In case of doubt - between model, photo or drawing, indications in drawings must be followed, unless specific notes prove differently.

#### 3.2 Weight

The calculation of the total weight of all set pieces within the design process, based on material densities below:

Birch plywood:	700 kg/m <sup>3</sup>	Poplar plywood:	448 kg/m <sup>3</sup>
Polystyrene:	40 kg/m <sup>3</sup>	Twin wall PC:	200 kg/m <sup>3</sup>
Wood in general:	500 kg/m <sup>3</sup>		

#### 3.3 Materials

Birch plywood is required for certain use and specifically mentioned in drawings if so.

Please note: All set pieces with paintwork delivered with additional paint for repairs.

#### 3.4 Quality and safety

Ensure that all assembly and removal is possible by using a wrench, hammer, and a screw-driver only.

All bolts to be minimum M10, unless otherwise specified.

Labelling: all sets pieces labelled with set piece number e.g. '111163.02.16' and weight indication.

Labels must be clear, accurate and consistent across the set.

- All hanging set pieces provided with rigging points M10.
- All rigging points used for RDT must be according to Directive 2006/42/EC, add. II A. All rigging points must have at least one bolt with lock nut bolted through the set piece.
- Use planed and bevelled wood only with no sharp edges.
- Channels in Twin Wall PC – must be closed.
- When using hollow profiles, ensure that ends are closed, and all weld seams must be smooth.



## Appendix 1. Project Description and Specifications

### Figaros Bryllup

---

- When using laser cut steel, edges bevelled.
- All drilled holes for bolted joints in metal profiles must be oversize, for simple installation of bolts.

Welding according to DS/EN/ ISO standards equivalent:

- Steel: DS/EN/ISO 5817 equivalent

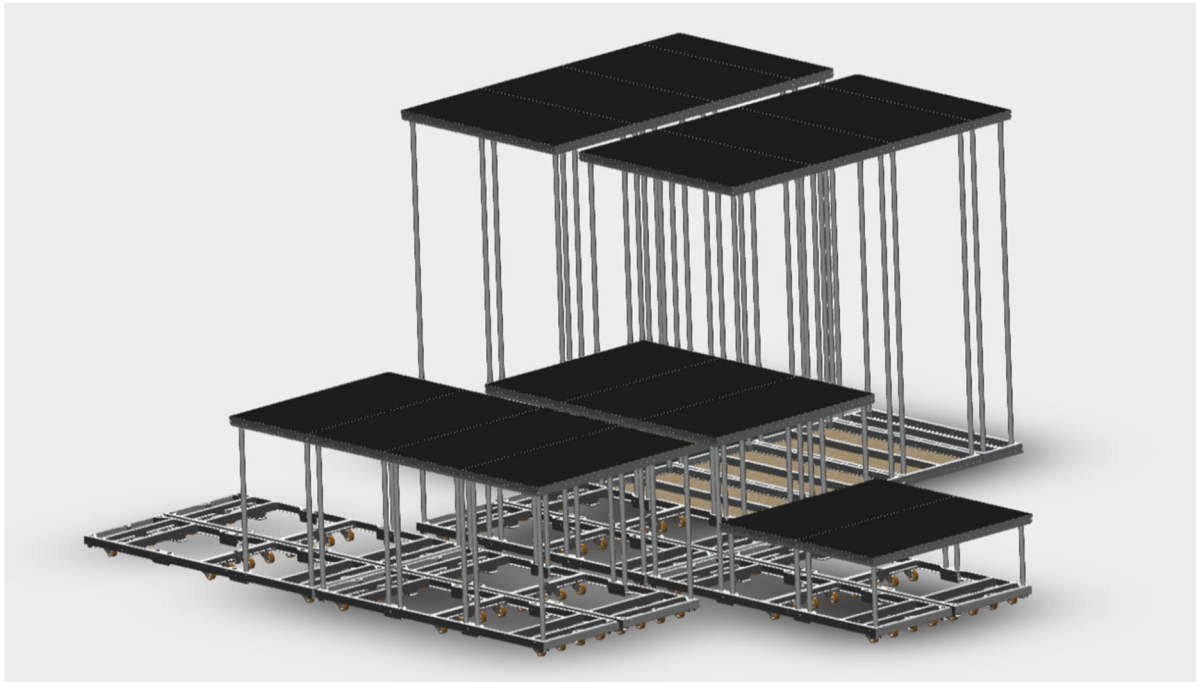
All material must be fire-retardant according to RDT regulations (minimum: D-s2, d2), in case of doubt please contact relevant contact person.

### Packaging

- Please insure protective and re-useable packaging for all structures and elements. The packaging must be sturdy and durable, allowing to be used also for storage.



#### 4. MATERIEL DELIVERIES BY RDT



##### **Podiums and RDT Wagons**

RDT will deliver the necessary podium constructions for this production:

- 21 pc. 2 x 1-meter podiums
- 4 pc. 2 x 0,5-meter podiums

RDT will deliver 8 pc. RDT Wagons for this production.

##### **Casters/wheels**

All necessary casters/wheels for the production will be delivered by RDT.





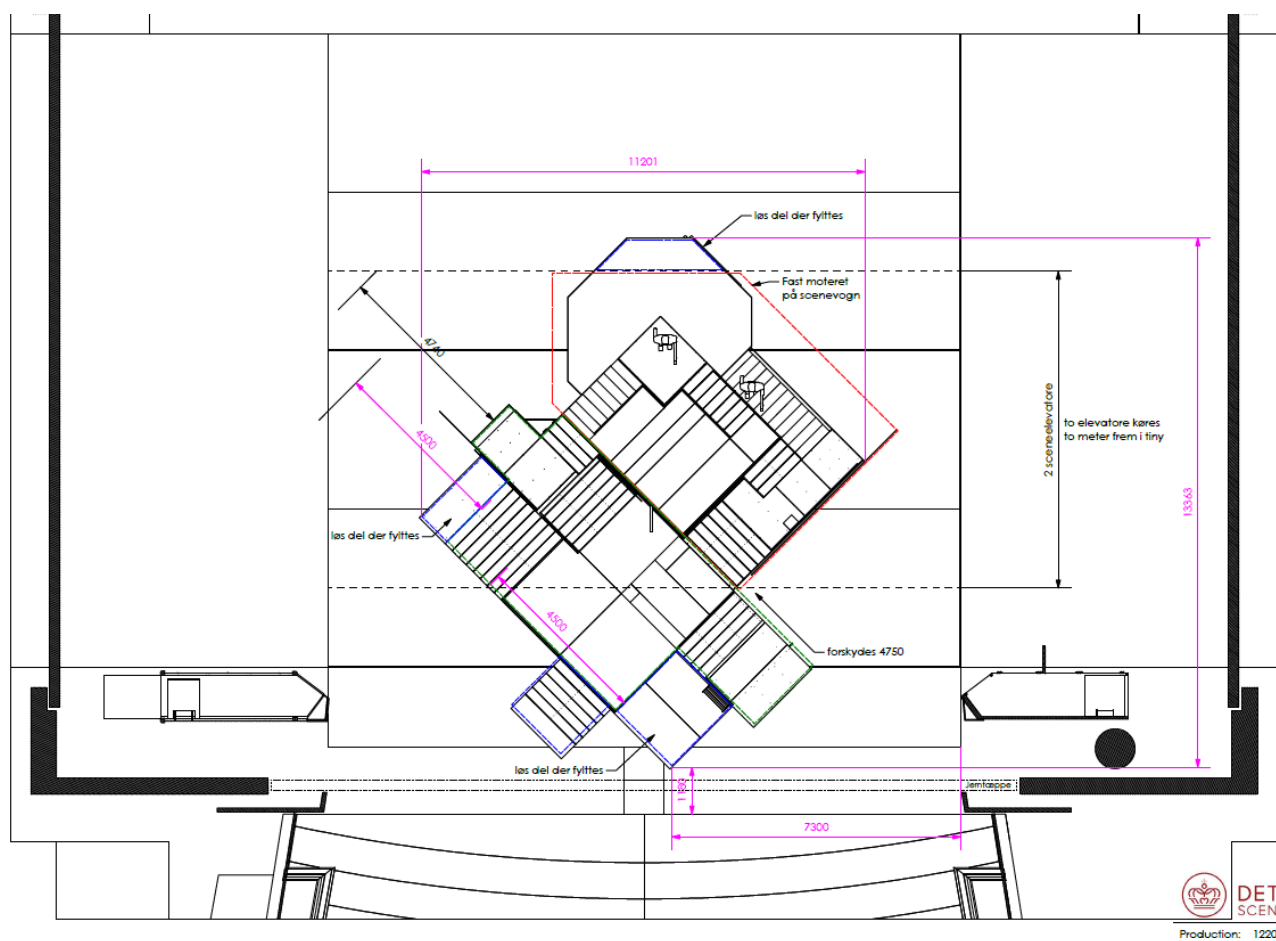
## 5 SET AND STAGE PLAN AND MODEL PHOTOS





## Appendix 1. Project Description and Specifications

### Figaros Bryllup

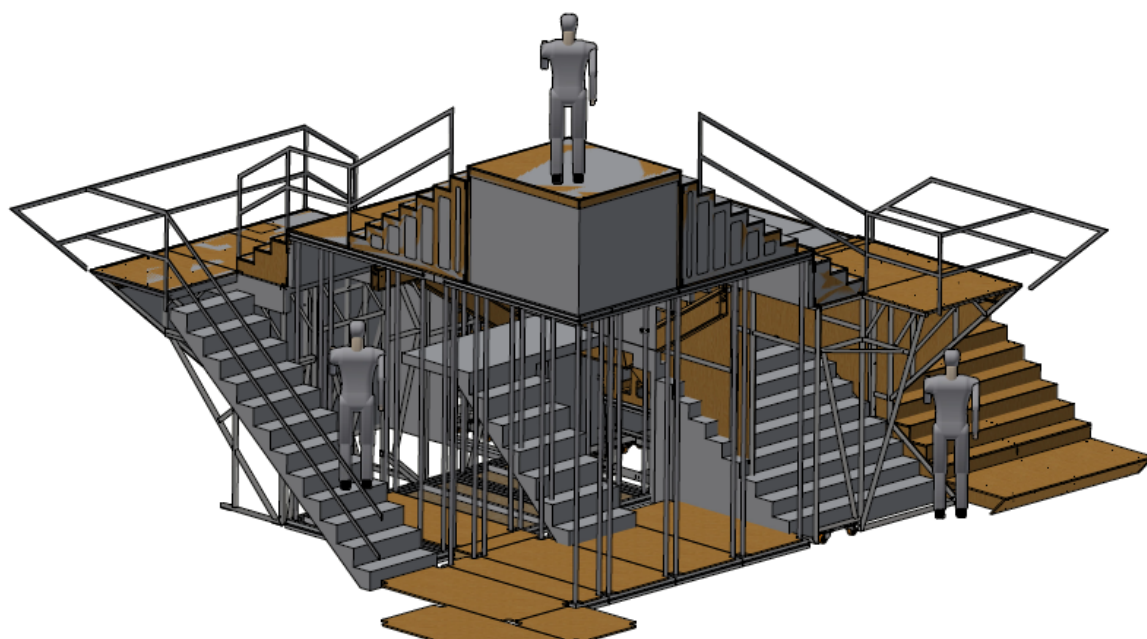




## Appendix 1. Project Description and Specifications

### Figaros Bryllup

---



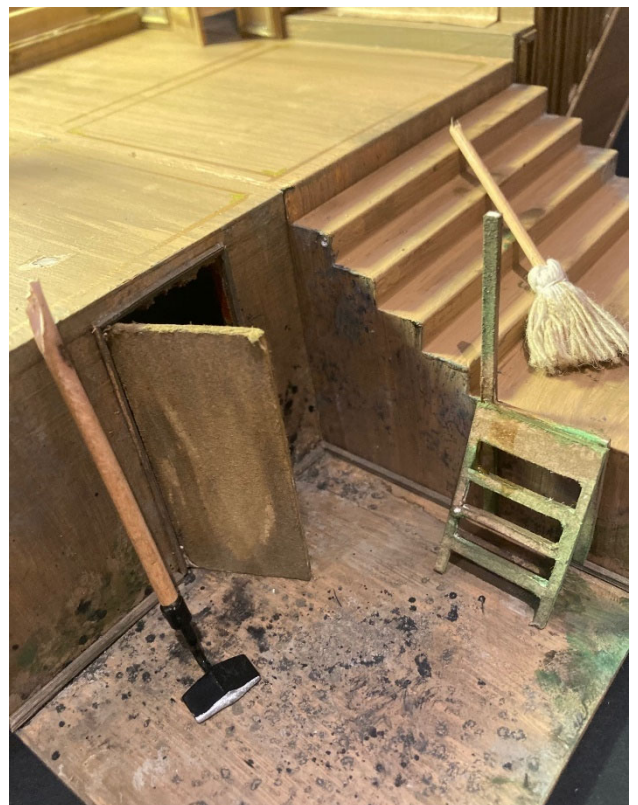




## Appendix 1. Project Description and Specifications

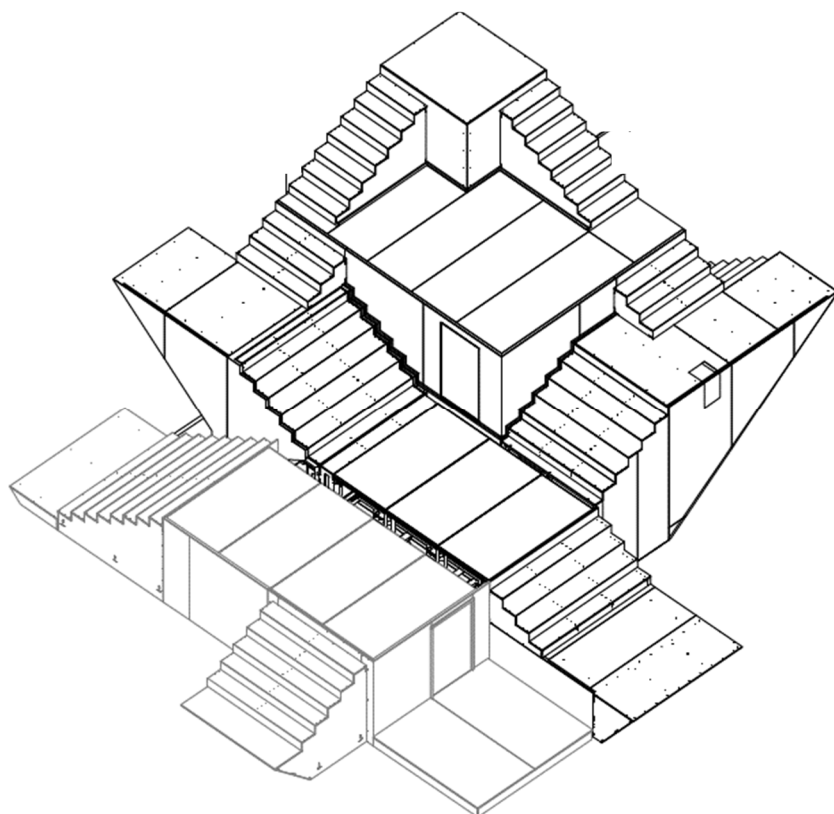
### Figaros Bryllup

---





## **6. 122006-01 STAIRS AND PLATEAUS**

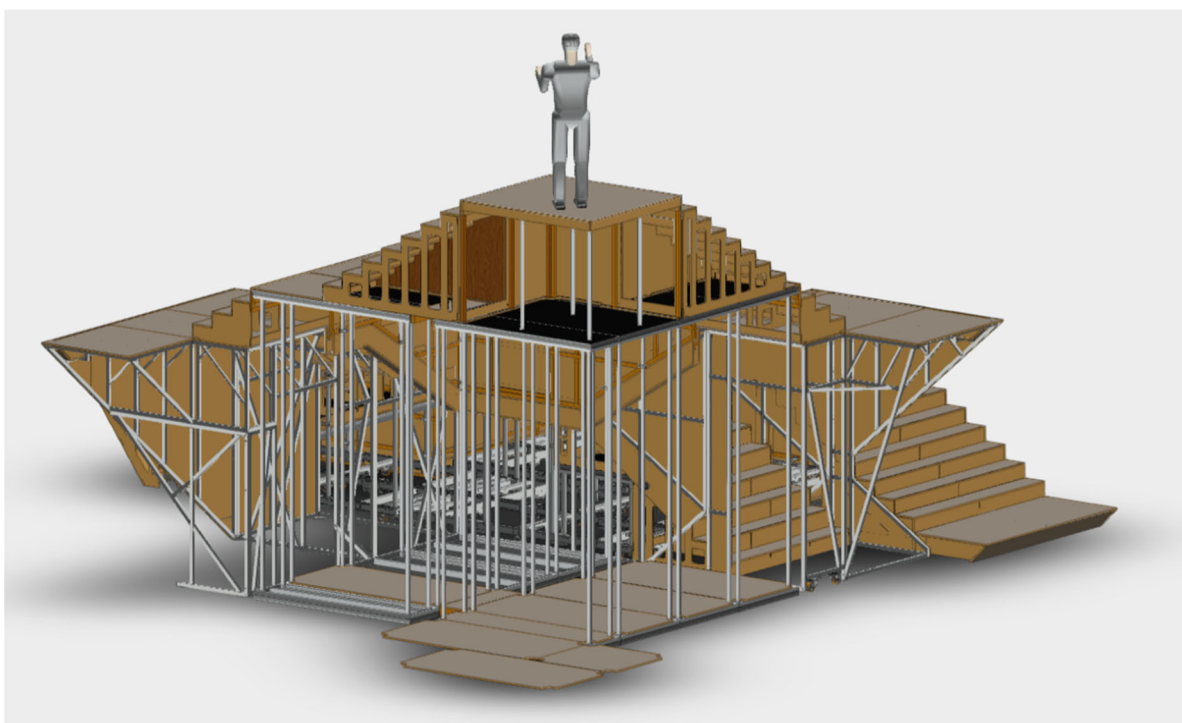
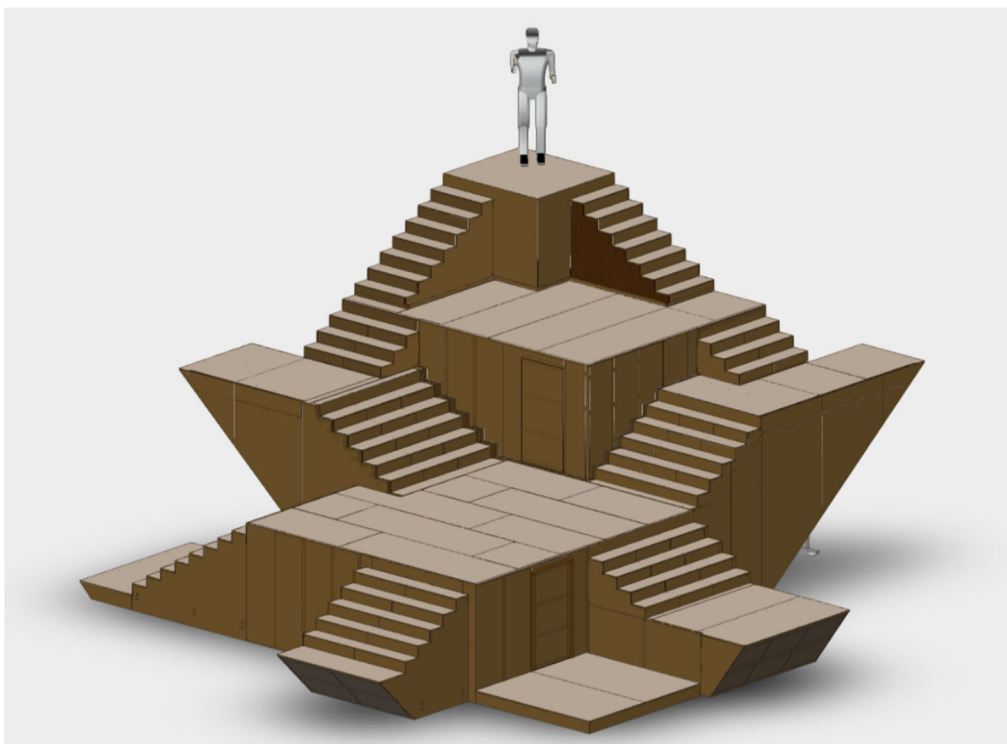




## Appendix 1. Project Description and Specifications

### Figaros Bryllup

---





## Appendix 1. Project Description and Specifications

### Figaros Bryllup

---

#### General Description

The set for “Figaros bryllup” is an almost static set, placed on a fixed position on the stage. The set is built with several floors and stairs in different level and height. The different floor of the set will represent different levels in society, with kitchen and kitchen staff on the ground floor and the count on the top floor.

#### Structure

Most of the supporting structure is built of standard podiums and RDT wagons. Construction inside triangle stairs SL/SR (KS/DS) is made from mild steel. Stairs and cladding are mainly made from birch plywood.

#### Materials

On top of the above-mentioned materials, there will be decoration on the cladding, made from wooden profiles and 3d shaped elements in suitable materials.

#### Function Description

The triangled stair SR/KS is made with an extra build in stairs, and an option to open the visible stairs from the backside, so that an entrance is possible from ground level behind the set.

In some edges and corners, space for light and haze will be established in the construction, as specified in drawings.

The mounting of LED and haze is not a part of this tender.

The door on the central second floor, is manufactured in a way that make it possible to destroy the doorplate at every rehearsal and show.

The elements are constructed to enable swift and easily moving of the set parts upstage, to clear fire curtain lines during emergency situations.

As the show is planned for touring, it is extremely important meticulously to observe drawings and divisions in the construction.

#### Surface

The entire surface is painted as wood, with a high level of golden details on the top floor, slowly downgrade into a dirty and musty wooden surface on the ground level.

Flooring must be painted in a way that is sustainable with a huge and continuously use.

The model will be available as a painting template during the production period.

Expect to carry out and present paint samples and samples of wooden profiles/moldings and embellishments for approval prior to production.

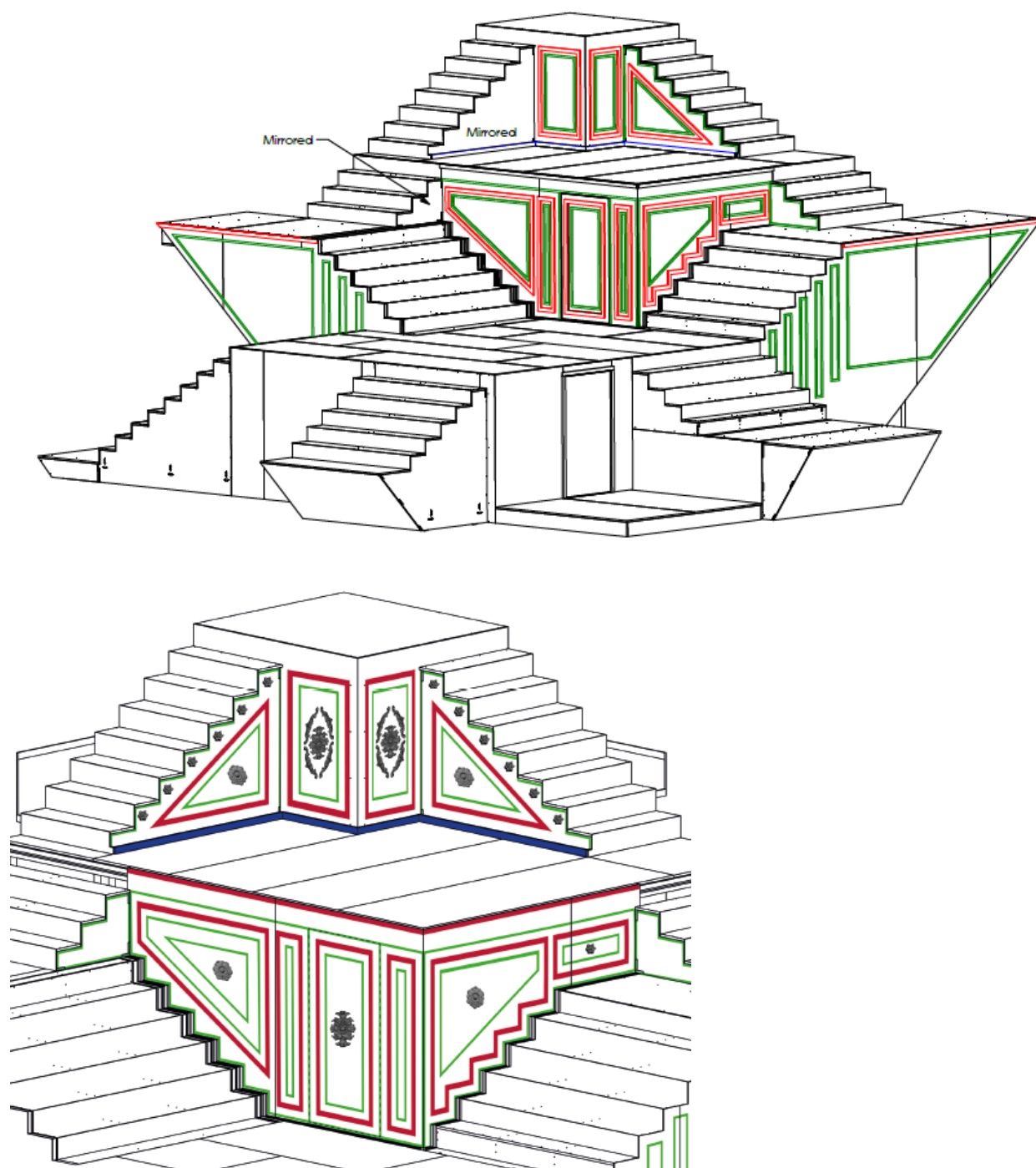




## Appendix 1. Project Description and Specifications

### Figaros Bryllup

---





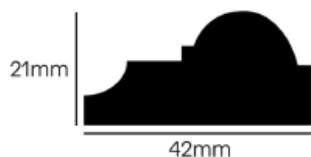


## Appendix 1. Project Description and Specifications

### Figaros Bryllup

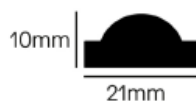
---

#### “RED” MOLDING REFERENCE

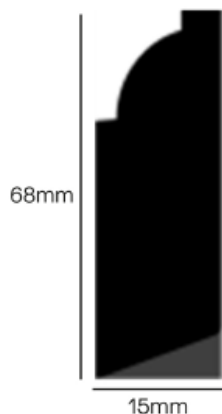


The thicker side of the asymmetric molding should always be on the outer edge when used as frame molding. When used as a horizontal panel at the top of a plateau the thicker side should be at the top of the molding.

#### “GREEN” MOLDING REFERENCE



#### “BLUE” MOLDING REFERENCE





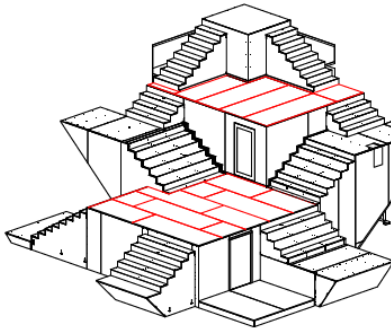
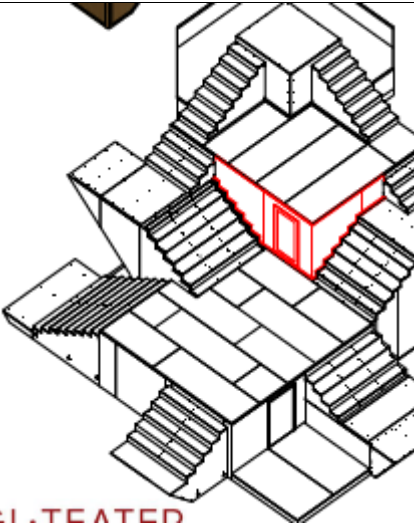
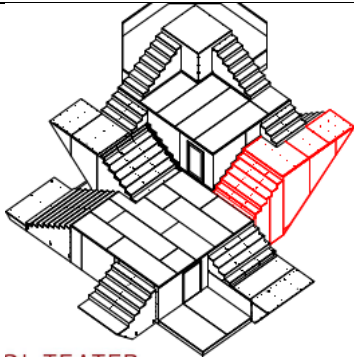
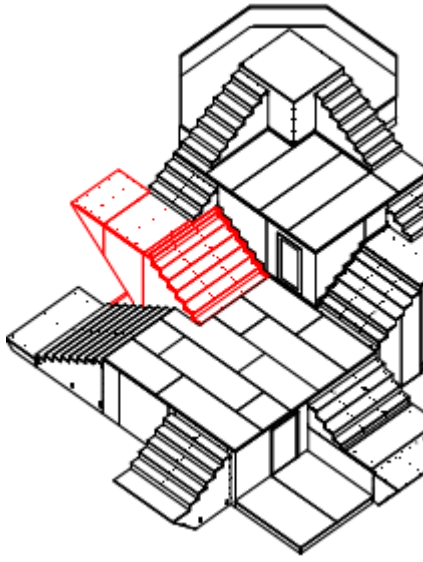
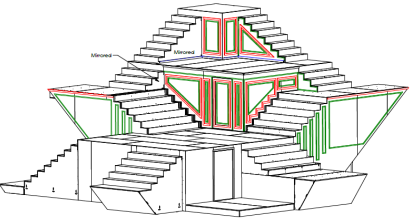
## Drawing references





## Appendix 1. Project Description and Specifications

### Figaros Bryllup

		
<b>122006-07-100</b>	<b>122006-08</b>	<b>122006-09</b>
		
<b>122006-10-100</b>	<b>122006-11-100</b>	